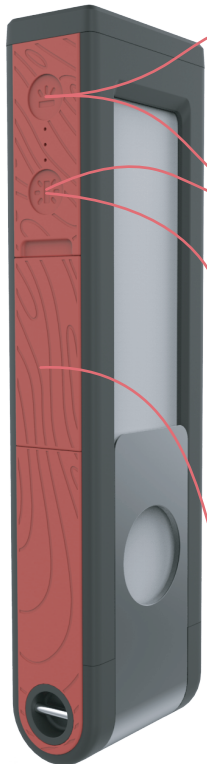


# HELIO

## QUICKSTART GUIDE



### Flashlight

Press once for brightest setting, press again for medium, press once again for low

**Press** both for brightest red lantern, press both again for medium, press both once again for low;  
**hold** both for flash mode

### Lantern

Press once for brightest setting, press again for medium, press once again for low

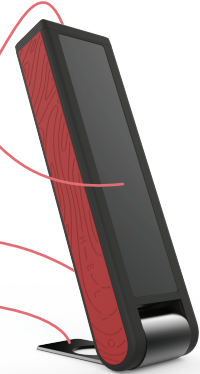
**High power USB**  
in & out (under flap)

**Solar Panel**  
1-Watt, ultra-efficient: full charge in 17 hours of direct sun

**Flashlight**  
Up to 150 Lumens

**Battery**  
Large-5,200 mAh

**Stand**  
Position HELIO any way you like, or hang it where you need light.



### Lantern

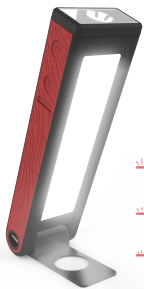
Up to 150 Lumens, white & red light

### USB Charging

- High-power in & out
- Charges battery in 6 hours
- Fast device charging: 10 watts

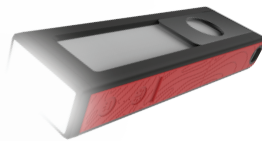
### Charge Indicator

Charge level is indicated by the number of lights illuminated.



### Lantern

- ⚡ **High Setting**  
150 lumens and 15 hours of run time
- ⚡ **Medium Setting**  
Up to 120 hours of run time
- ⚡ **Low Setting**  
Up to 1 month of run time!



### Flashlight

- ⚡ **High Setting**  
150 lumens and 15 hours of run time
- ⚡ **Medium Setting**  
Up to 120 hours of run time
- ⚡ **Low Setting**  
Up to 1 month of run time!



### Infinite Red™

- ⚡ **1 hour of sun**  
each day gives you continuous light
- ⚡ **Up to 1 month of run time**  
The red lantern is great for preserving your night vision, or for working in the dark

## SPECS

- **Battery:**
  - Capacity / chemistry: 5200 mAh Li-ion
  - Charge cycles: 350
  - Life expectancy (assuming average usage): 3.5 - 5 years
- **Solar panel:** 1 Watt: full charge in 17 hours (with continuous maximum sun)
- **2 USB Ports:**
  - **USB in:** MicroUSB, up to 2A. Full charge in 3 hours.
  - **USB out:** USB-A, up to 2A. Charges typical smartphone in 1-2 hours.
- **Flashlight:** 1 LED
- **Lantern (red):** 26 red LEDs
- **Lantern (white):** 28 white LEDs

- **Stand rotation:** 270 Degrees
- **Lanyard bar:** included
- **Size:** 216mm X 61mm X 32mm
- **Weight:** 370 grams
- **2 Buttons for operation:**
  - **Button A:** cycles flashlight through high, med, low, off
  - **Button B:** cycles Lantern (White) through high, med, low, off
  - **Buttons A&B together:** cycles lantern (red) through high, med, low, off
  - **Hold Buttons A&B for more than 3 seconds:** engages emergency flash mode
  - **Any other button click pattern:** switches off all lights



makers4good.com

100% Profits to Charity



HELIO.energy